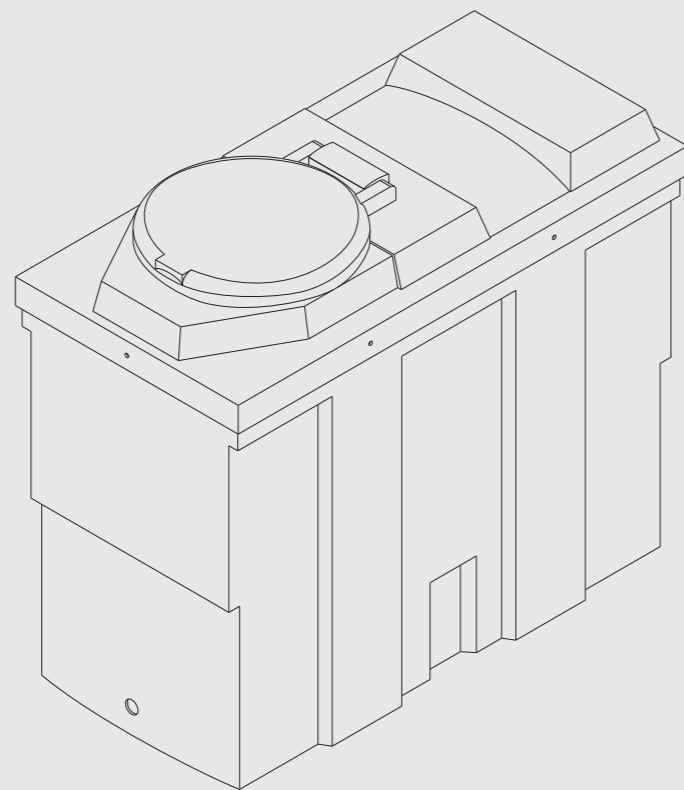


DESO

ENGINEERING

Deso Engineering
Slade Way
Roughmoor Industrial Estate
Williton
Somerset
TA4 4TB

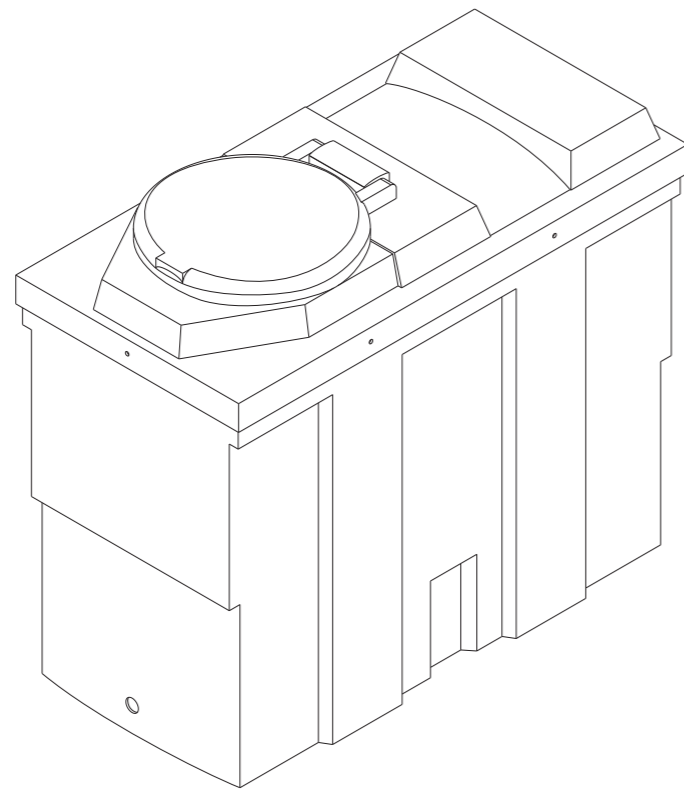
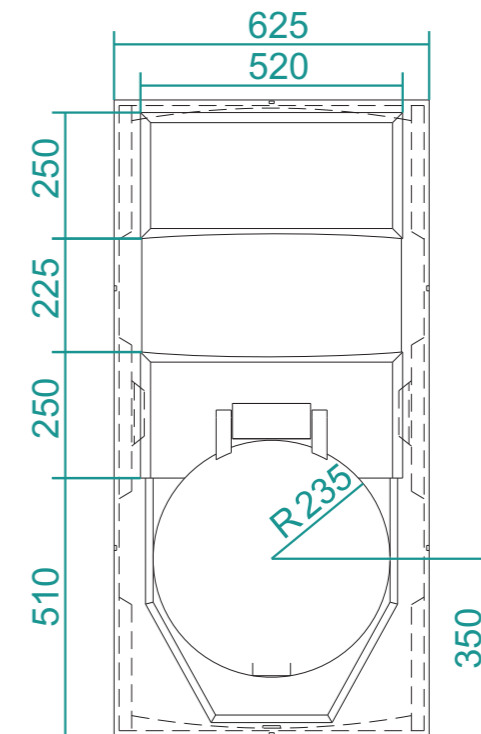
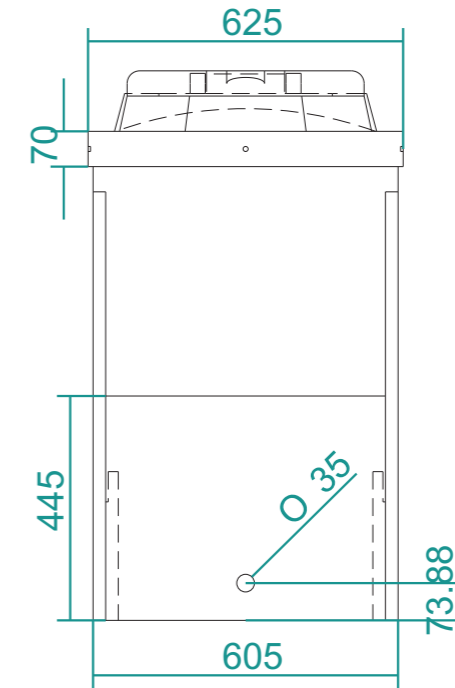
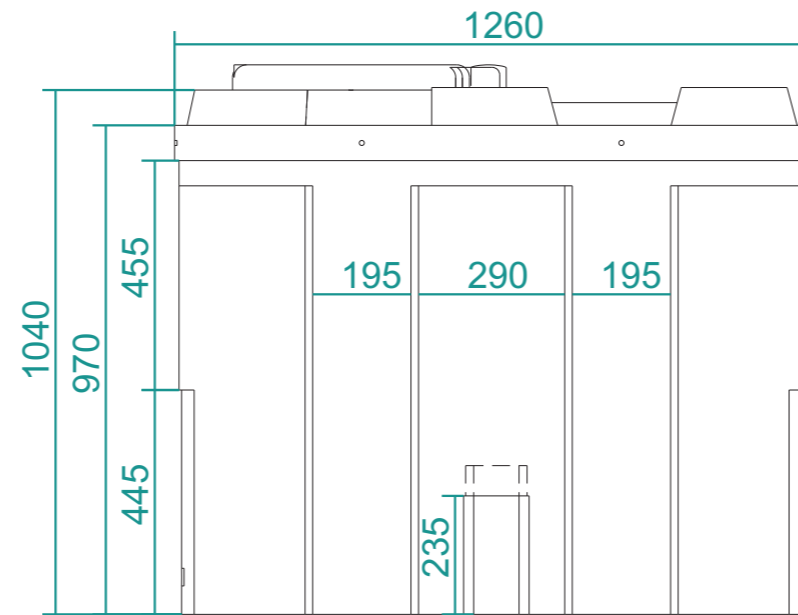
Telephone - 01984 632026
Fax - 01984 634267
enquiries@desoengineering.co.uk



SL500B

| | |
|--------------------|-----------|
| Weight | 74kg |
| Capacity | 450litres |
| Diameter | - |
| Length | 1260mm |
| Width | 625mm |
| Height | 1040mm |
| Ofcert licence No. | pending |

SL500B



| | | | | |
|---|------------|------------------------------------|--------------------|--|
| SL500B | No. 1 of 1 | 3rd Angle Orthographic | scale: 1:15 | Design by Inky Design www.inky-design.co.uk |
| DESO ENGINEERING Telephone - 01984 632026 | | drawn by: Jonathan Taphouse (BEng) | | |
| | | date: 25 - 05 - 2010 | ISO | |